



## *Parts & Accessories Catalog*

### **SUNRISE MORNING FLIGHT**

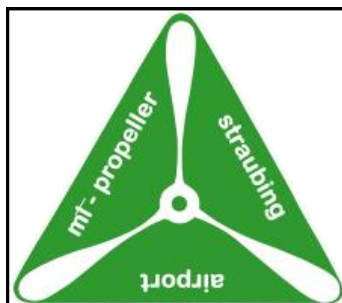


The Wright Brothers created the single greatest cultural force since the invention of writing. The airplane became the first World Wide Web, bringing people, languages, ideas, and values together.

Kitfox Aircraft, LLC  
ORDER PARTS—Ph. (208) 337-5111 / Fax (208) 337-5116 / Email - [orderparts@kitfoxaircraft.com](mailto:orderparts@kitfoxaircraft.com)  
ALL PRICES ARE SUBJECT TO CHANGE WITHOUT NOTICE

# KITFOX AIRCRAFT

is proud to be partners with the following companies





# Table of Contents

Gift Items . . . . .	4
Avionics & Instruments. . . . .	5
Books, Videos. . . . .	7
BRS Systems . . . . .	8
Cargo Storage & Covers . . . . .	9
Cover & Finish Products. . . . .	11
Decals, Placards. . . . .	15
Electrical/ Lighting . . . . .	17
Engine Options. . . . .	19
Engines. . . . .	24
Epoxies & Adhesives . . . . .	28
Fiberglass. . . . .	29
General Items . . . . .	30
Hardware. . . . .	35
Headsets. . . . .	36
Landing Gear. . . . .	37
Maintenance Items. . . . .	44
Propellers, Spinners. . . . .	46
Tools. . . . .	51
Upholstery, Interior Items. . . . .	55
Windows, Pre-Formed Plastics. . . . .	57
Windows & Door Options. . . . .	60
Wings & Wing Options. . . . .	62
Order Form. . . . .	66
Return Policies . . . . .	67

**All Pricing is Subject to Change Without Notice.**

Revision -08-2024©

# Gift Items

Gift Items

## Soft Style Hats

One size fits all, adjustable strap.

Black/White, Navy/White w/ hollow Kitfox logo  
 Blue/White, Stone/Black, White/Navy/Red w/color Kitfox Logo.

Colors & Availability may vary:



One Size Fits All Soft Cap	<b>Kitfox Hat Soft Style</b>	\$16.00
----------------------------	------------------------------	---------

## Trucker Hat with Kitfox Logo

Structured hat, mesh netting back Colors & availability may vary



Red/Black Royal Blue/Blue Gray/Black Gray/Gray Gray/Blue Olive/Black Tan/White

Kitfox Trucker Hat with Kitfox Logo Adjustable	<b>Kitfox Hat with Kitfox Logo</b>	\$30.00
--	------------------------------------	---------

## Kitfox T-Shirt Black Shirt with Red/Yellow Design

100% Cotton pre-washed

Front Logo



Print on Back



S, M, L, XL,		\$20.00
XXL and XXXL limited Supply		\$25.00



Kitfox Aircraft, LLC  
 ORDER PARTS—Ph. (208) 337-5111 / Fax (208) 337-5116 / Email - [orderparts@kitfoxaircraft.com](mailto:orderparts@kitfoxaircraft.com)  
 ALL PRICES ARE SUBJECT TO CHANGE WITHOUT NOTICE

# Avionics & Instruments

## Garmin Complete Panels with Prewired Harness

Kitfox Aircraft offers complete Garmin Instrument panels with a prewired harness for installation. The panels are designed to be all inclusive and installed in approximately 1 day. Designed for use with the Rotax 912iS, 915iS & 916iS engines only at this time. Single or Dual Screens. with or without Auto Pilot, Gray or Black Powder Coated and Engraved. **Call for details**



Panel #  
**980051.101**  
\$25,800.00

Single 10"  
No Auto Pilot



Panel #  
**980051.100**  
\$,29,000.00

Single 10" Auto  
Pilot w/507 AP  
Controller



Panel #  
**980051.201**  
\$29,500.00

Dual 10 & 7"  
NO Auto Pilot



Panel #  
**980051.200**  
\$33,000.00

Dual 10 & 7 "  
Auto Pilot w/507  
AP Controller

Kitfox Aircraft, LLC  
ORDER PARTS—Ph. (208) 337-5111 / Fax (208) 337-5116 / Email - [orderparts@kitfoxaircraft.com](mailto:orderparts@kitfoxaircraft.com)  
ALL PRICES ARE SUBJECT TO CHANGE WITHOUT NOTICE



## Avionics & Instruments

### Want to do it yourself , Kitfox Aircraft is OEM for Garmin Avionics

G3X flight displays are the latest in “glass cockpit” technology from Garmin. The G3X offers a full range of upgrade solutions. Choose the number of displays you desire with options such as Autopilot, XM weather/music, ADS-b traffic options.

Garmin G3X System & Components	G3X	Call for Quote
--------------------------------	-----	----------------



### Auto Pilot Install Kits Now 3 Axis Available

Add to your Garmin G3X System with Auto Pilot, Kitfox has install kits for both Pitch And Roll Axis along with the new 3rd Axis Yaw Dampener. Additional Servos and connector Kits are not included—1 servo & connector kit for each axis required. **S7 Super Sport & STi Only**

Garmin Auto Pilot Install Kit—Pitch & Roll	Part # 98265.000	\$405.00
Garmin Auto Pilot Install Kit –Yaw Dampener	Part # 98318.000	\$235.00



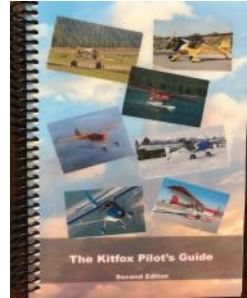
**Kitfox STi 113VB**

# Books, Videos

Books, Videos

## “Kitfox Pilot’s Guide”

History and information on all Kitfox models.  
Great for the newcomer to Kitfox.  
Covers limitations, emergency procedures, normal operation, performance, weight and balance, etc.  
2nd addition 9/22



Kitfox Pilot Guide Book	Part #9051-SS	39.95
-------------------------	---------------	-------

## Pilot’s Operating Handbook Model 4

This handy reference guide provides vital information concerning your Model 4-1050, Model 4-1200, Model 4 Speedster, and Kitfox classic 4. Subjects covered include limitations, emergency procedures, normal procedures, performance, weight and balance, flight testing, handling and maintenance.



Model 4 Operating Handbook	Part # 9050- MIV	\$13.95
----------------------------	------------------	---------

## Covering Manual-Only Available online

The official Poly-Fiber how-to manual is currently only available online. It's a whole covering course in a book. Please visit [conaircraft.com](http://conaircraft.com) to view the manual and see the catalog of Poly-Fiber products.

**Available on DVD Only**

Aircraft Covering DVD	Part # 60072.102	\$39.95
-----------------------	------------------	---------

## Log Books



ASA Aircraft Log Soft Cover	Part # 60014.000	\$7.50
ASA Engine Log Soft Cover	Part # 64467.000	\$7.50
ASA Pilot Log Hard Cover	Part # 64463.000	\$10.00
Propeller Log Soft Cover	Part # 64467.101	\$12.00

Kitfox Aircraft, LLC

ORDER PARTS—Ph. (208) 337-5111 / Fax (208) 337-5116 / Email - [orderparts@kitfoxaircraft.com](mailto:orderparts@kitfoxaircraft.com)

ALL PRICES ARE SUBJECT TO CHANGE WITHOUT NOTICE

## Ballistic Recovery Systems



Available through BRS. For information on pricing and type. Please Contact BRS Direct @ 651 457 7491

When a prang seems inevitable, endeavor to strike the softest, cheapest object in the vicinity, as slowly and gently as possible.  
~advice given to RAF pilots during W.W.I

If you're faced with a forced landing, fly the thing as far into the crash as possible.  
Bob Hoover



# Cargo Storage & Covers

Cargo Storage & Covers



Out for morning coffee.  
Chukar Flats, OR  
Mike Herzog  
Bend OR

## Cargo Pod Kit

This sturdy “drop tank” style pod comes in handy on those trips where you need to carry a little extra baggage. It can be easily detached for carrying along or stored when not needed. Allows about 2.5 cubic feet of storage and adds about 10 pounds when empty. This pod can carry approximately 40 pounds. Available Model 1-M4 & Series 5–Series 7 Super Sport with Aluminum Spring Gear Only.



Cargo Pod Kit—please specify model	Part # 10099.000	\$495.00
------------------------------------	------------------	----------

## Cabin Covers Available for M3-S7 Super Sport & STi

Protect your airplane from the elements with these durable, weather resistant covers. These high quality cabin covers are made from a NEW “Evolution 4” fabric “Shadow Gray” in color. The covers are 100% polypropylene with 4-layer construction. They are UV resistant and moisture repellent. These quick drying covers will not shrink or stretch and are mold and mildew resistant. Includes Kitfox logo.



Cabin Covers - 3, 4, 5, 6, 7, SS, & STi ( <b>Specify model</b> )	Part # 67015.101	\$495.00
--	------------------	----------

## Baggage Sacks—Model 4 & Lite Squared

These heavy Cordura fabric containers fasten to fuselage tubing behind the seat for easy access from within the cabin. Sack only. 27 x 20 x 18 “ Max Weight 40 lbs.

Specify Model, Prices may vary

Baggage Sack	Part # 64817.000	\$350.00 & up
--------------	------------------	---------------

Kitfox Aircraft, LLC

ORDER PARTS—Ph. (208) 337-5111 / Fax (208) 337-5116 / Email - [orderparts@kitfoxaircraft.com](mailto:orderparts@kitfoxaircraft.com)

ALL PRICES ARE SUBJECT TO CHANGE WITHOUT NOTICE

## Cargo Storage & Covers

### Cargo Bay Kit

This huge cargo bay kit can add approximately 10 cubic feet of storage space and up to 150 pounds of cargo carrying ability (CG limited). This storage bag can be used on Kitfox Series 5, 6, 7, Super Sport & STi kits.

**Kit includes:**

- Baggage sack
- Floor panel
- Hardware to install

Please specify model



Super Sport Standard (32") Cargo Bay Kit	Part # 64891.101	\$660.00
Super Sport Extended (48") Cargo Bay Kit	Part # 64891.105	\$895.00
STi Standard (32") Cargo Bay Kit	Part # 64891.505	\$660.00
STi Extended (48") Cargo Bay Kit	Part # 64891.506	\$895.00



*Dan Herr  
Memphis, TN*

In flying I have learned that carelessness and overconfidence are usually far more dangerous than deliberately accepted risks.

Wilbur Wright in a letter to his father, September 1900

# Cover & Finish Products

## Cover Kit

The Cover Kit includes the following items:

- 2" Light Finish Tape 50 yd. (3)
- 3" Light Finish Tape 25 yd. (1)
- 4" Light Finish Tape 25 yd (1)
- 35 yd.– Medium –5 Poly-Fiber Fabric
- Poly-fiber Manual (Stits) - online only
- Poly-Brush (2 gal.)
- Poly-Tak (2 qt.)
- Epoxy Reducer E-500 (1 qt.)
- Epoxy Varnish EV-400 (1 qt.)
- Epoxy Varnish Catalyst EV-410 (1 qt.)
- Poly-Fiber Reducer R65-75 (1 gal.)
- 12" Needle
- Reinforcement Tape—1/2" x 40yd (2)
- Rib Lace Thread—Flat
- Anti-Chafe Tape
- Inspection Ring (4)
- Inspection Plate (4)

Complete Cover Kit	Part # 59911.000	\$1500.00
--------------------	------------------	-----------

## Polyester Fabrics

Medium - 5 weight 2.79 oz.  
Heavy weight fabric 3.5 oz. - Available  
Sold as 20 or 35 yard rolls



20 yds.	Part # 10261.020	\$315.00
35 yds.	Part # 10261.035	\$552.00

## Pinked Edge Polyester Finishing Tapes

1" 25 yd.	Part # 01116.101	\$20.00
2" 50 yd.	Part # 01116.000	\$45.00
3" 25 yd.	Part # 01117.000	\$45.00
4" 25 yd.	Part # 01118.000	\$50.00
6" 25 yd.	Part # 01118.101	\$65.00

## Bias Tape

2" Bias Tape 25 yd.	Part # 10284.000	\$43.00
3" Bias Tape 25 yd.	Part # 10285.000	\$65.00
4" Bas Tape 25 yd.	Part # 10286.000	\$80.00



## Cover & Finish Products

### Rib Lace Reinforcing Tape 1/2"

Rib Lace Reinforcing Tape 1/2 60yd.	Part # 10081.000	\$96.75
-------------------------------------	------------------	---------

### Polyester Thread & Cord

Flat is standard. Round is also available.

Roll - Flat 50 yd.	Part # 10292.000	\$68.95
--------------------	------------------	---------

### Rejuvenator

RJ 1200	1 Gal.	Part # 10314.000	\$88.75
---------	--------	------------------	---------

### Poly-Fiber Coatings

Poly-Tak Cement	1 Qt.	Part # 58001.000	\$35.40
Poly-Brush	1 Gal.	Part # 58000.000	\$110.00
Poly-Spray	1 Gal	Part # 68109.000	\$109.00

### Reducers

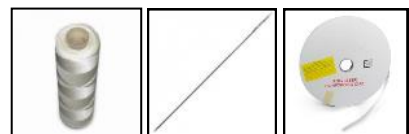
R65-75	1 Gal.	Part # 68110.000	\$63.00
R8500	1 Gal.	Part # 68111.000	\$64.00
UE-820	1 Gal.	Part # 64280.102	\$83.00

### UV Blocker / Flattener—Typical no stock can special order

UV Blocker	1/2 Pt.		\$31.50
Flattener	1 Qt.		\$34.95

### Rib Stitching Kit, Poly-Fiber

Includes Poly-Fiber products for rib stitching your Kitfox wings.  
Flat lacing cord, 12" needle, & reinforcement tape.



Rib Stitching Kit	Part # 19045.000	\$275.00
-------------------	------------------	----------

# Cover & Finish Products

Cover & Finish Products

## Poly Fiber Epoxy Primer and Varnish

EP-420 Primer	1 Qt.	Part # 68012.000	\$63.00
EP-430 Epoxy Catalyst	1 Pt.	Part # 68013.000	\$34.00
Varnish EV-400	1 Qt.	Part # 68014.000	\$56.00
Reducer E-500	1 Qt.	Part # 68011.000	\$23.55
Catalyst E-V410	1 Pt.	Part # 68015.000	\$24.75

## Poly-Fiber Practice or Small Repair Kit.

Kit includes a simplified manual, thermometer, rib lacing needle, practice frame & coatings to cover it at least twice through the Poly-Spray stage. Great to learn and practice rib lacing.



Intro/Practice Kit	Part # 10088.000	\$88.00
--------------------	------------------	---------

## Superfil Epoxy Filler

Sand able, Paintable & Non-Shrinking Filler Kit



Superfil Epoxy Kit - 2 part	Part # 10347.000	\$42.00
-----------------------------	------------------	---------



*Joe Ruscito S7 SS*



*Ty Ferkin MIV*

Kitfox Aircraft, LLC

ORDER PARTS—Ph. (208) 337-5111 / Fax (208) 337-5116 / Email - [orderparts@kitfoxaircraft.com](mailto:orderparts@kitfoxaircraft.com)

ALL PRICES ARE SUBJECT TO CHANGE WITHOUT NOTICE

# Cover & Finish Products

## Cleaners

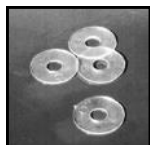
#310 Alkaline Cleaner	1 Gal.	No longer Available through Kitfox	\$36.50
2210 Paint Surface Cleaner	1 Gal.	Part # C2210	\$58.50
C-2200 Metal Sol Metal Cleaner	1 Gal.	Part # 10355.000	\$66.75

## Misc. Recovering & Finishing Supplies

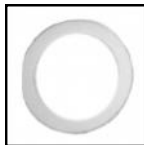
Seaplane Grommets	Part # 97000.000	\$0.68
Plastic Drain Grommets	Part # 10373.000	\$0.30
Rib Lacing Needles—Straight Tip 12"	Part # 10084.000	\$12.00
Inspection Rings	Part # 54002.000	\$1.40
Inspection Covers	Part # 55003.000	\$9.95
Anti-Chafe tape 60 yd	Part # 10086.000	\$20.50
Thermometer	Part # 10087.000	\$14.40
Hobby Iron—Great for Finish Tapes	Part # 98249.505	\$35.00
Anti-Stick Teflon sheet 12" x 12" pc. **Great for use between your Iron & finish Tapes.**	Part # 98246.000	\$7.00



Sea Plane Grommet



Plastic Drain Grommet



Inspection Ring



Inspections Cover Plate



Thermometer



Hobby Iron

## Digital Covering Fabric Iron

This digital iron is uniquely designed for heat shrinking fabric with fantastic results. The digital temperature control maintains temperature precisely, set it and forget it. No more calibrating or continuous adjustments.

Temp Range 225F-355F (107C-176C) Includes No-slip resting pad and insulated bag for storage and travel



Fabric Pro Digital Covering Fabric Iron	Part # Fab Pro Iron	\$190.00
---	---------------------	----------



# Decals, Placards

## Passenger Warning Placard Vinyl

These passenger warnings must be displayed in the cockpit of all amateur-built aircraft. Verbiage complies with the latest FAA requirements.



Passenger Warning Vinyl	Part # 60040.000	\$3.25
-------------------------	------------------	--------

## Data Plate Placard

Stainless Steel For Experimental Aircraft

Data Plate Placard	Part # 12920.000	\$13.00
--------------------	------------------	---------

## Kitfox Decals



KITFOX Logo - 8" (color or hollow)	Part # Logo decal 2017 KFA 8"	\$8.00
KITFOX Logo - 12" (color or hollow)	Part # Logo decal 2017 KFA 12"	\$18.00
KITFOX Logo - 22" (hollow only, black or white)	Part # Logo 2017 fox head & text	\$25.00

\*\*Hollow Logos are in Black or White only

## Experimental Decals

Experimental decal is 2" high - black or white  
Required on all experimental aircraft.



Experimental Decal WHITE OR BLACK	Part # 60038.000	\$20.00
-----------------------------------	------------------	---------

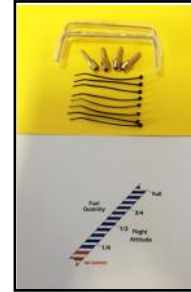
# Decals, Placards

Decals, Placards

## Fuel Placard Kit

Includes 1 left and 1 right fuel placard,  
2 laminating sheets, 4 brass barb fittings  
2 bent site tubes & zip ties

Hose clamps can be used in-place  
of zip ties, Hose Clamps sold separately.



Fuel Placard Kit MIV, 5,6,7-SS	Part # 09007.000	\$40.00
Fuel Placard Kit STi Only	Part # 09008.000	\$40.00

## Fuel Site Tube & Fitting Retro Fit Kit

Replace the old style hard plastic  
tubing and black plastic fittings with new  
style Tygon tubing with insert to prevent any  
pinch in the line and barbed brass fittings.  
Hose clamps can be used in-place  
of zip ties, Hose Clamps sold separately



Tubes, Brass Fittings & Zips MIV,5,6,7SS	Part # 09007.000	\$19.50
Tubes, Brass Fittings & Zips STi ONLY	Part # 09008.000	\$19.50



**Tim Petsche**  
**Kitfox S7 895KF**  
*(Big Sexy)*

Talking about airplanes is a very pleasant mental disease.  
Sergei Sikorsky

# Electrical, Lighting

## Trim Position Sensor Kit

Indicates Trim Position on either an LED indicator or for most EFIS Panel displays.



Trim Position Sensor Kit—For Glass EFIS	Part # 73501.000	\$136.00
LED Trim Position Indicator—shown above sold By	Ray Allen Co use Part # RP4	NA

## Assorted Electrical Parts

Kitfox has a large assortment of electrical parts available for your construction needs. Here is a partial list of what is available. We also stock the most common electrical connections and wire.

4" Electronics Heater Fan	Part # 64050.100	\$16.00
Regulator, Rectif Ducatiti	Part # 10595.000	\$175.00
Switch, Rocker Electric Trim Switch S5-S7-SS	Part # 16012.701	\$24.00
Insert Housing, Trim Switch Bracket S5-6	Part # 16012.501	\$6.50
912 Master Relay	Part # 46024.000	\$40.00
Toggle Switch, SPST	Part # 46019.000	\$12.50
Toggle Switch, DPDT	Part # 69232.000	\$31.50
SPST On-Off Round Rocker Switch Black I/O	Part # 98075.000	\$5.50
DPDT HI, Low, Off Round Rocker Switch Black	Part # 98075.101	\$11.00
Switch, SPST On-Off Push Button Red– Start Push Button	Part # 98105.102	\$7.00
Housing Engine Start Switch	Part # 98237.101	\$10.00
Momentary Switch Guard (912iS)	Part # 98284.000	\$13.00
Radio Noise Filter	Part # 66000.000	\$25.90
Bracket for Noise Filter	Part # 63028.000	\$6.00
Ground Bus Bar (Pictured hardware not included)	Part # 98285.000	\$16.00
Power Bus Bar (3/4" spacing, does not include circuit breakers)	Part # 98287.000	\$16.00



Kitfox Aircraft, LLC

ORDER PARTS—Ph. (208) 337-5111 / Fax (208) 337-5116 / Email - [orderparts@kitfoxaircraft.com](mailto:orderparts@kitfoxaircraft.com)

ALL PRICES ARE SUBJECT TO CHANGE WITHOUT NOTICE



## Electrical, Lighting

### Low Fuel Indicator

For wing tank equipped aircraft.  
Mounts in line above header tank



Low Fuel Indicator	Part # 73504.000	\$185.00
--------------------	------------------	----------

### Rudder Tail Light Strobe

For additional recognition add a strobe light to your rudder. For use with Whelen Microburst or Aero Sun Tail. Tail light strobe sold separately.



Rudder Tail Light Strobe Kit	Part # 98234.500	\$135.00
Whelen Micro Burst Tail Light Strobe	Part # 11-08472	\$495.00
Aero LED Sun Tail (White light & Strobe)	Part # Sun Tail 12V	\$495.00

### Batteries

12 volt. AGM or LiFe Lithium Batteries. Completely sealed and acid free.  
Battery is leak proof and vibration resistant. Battery and tray sold separately.



Earth X Lithium Battery 900 Series (use w/915iS)	Part # 98312.000	\$449.00
Battery Box/Tray Kit 915iS Only Super Sport or STi	Part # 98297.000	\$150.00
Battery Box for AGM Battery—White Molded Plastic	Part # 49029.000	\$43.00
Optimate Model 9.5 amp Lithium Charger	Part # 98240.500	\$181.00

### Aero LED Lighting

AeroLED's are a wing-mounted LED landing light system with a built-in wig wag mode in addition to its standard operation as a landing/taxi light. Aero-sun 1600 and Aero-Sun Lite Landing/Taxi lighting system. Aero Pulsar EXP is an LED-based Nav/Strobe lighting system.



1-Micro-Sun Recon Light	Micro Sun 01-1170	\$351.00 Single
2-Sunbeam Landing/Taxi (Fits STi Light Housing)	Sunbeam Landing/Taxi 90-1000	\$395.00 Single
3-Pulsar Navigation/Strobe Lgts	Pulsar 01-1100-12	\$995.00 Pair
4-Sun Tail White Light & Strobe	Sun Tail 01-1260-12	\$495.00 Single

# Engine Options

## Rotax '912UL & 912ULS Series' Engine Component Kits

The 912, 912ULS, engine component kits are the most comprehensive engine kits. Includes all major firewall forward components. Does not include: Exhaust, Prop, Spinner, Spacer, Collar Nuts or Ring Mount as needed.

<i>Model 3 &amp; 4 - Round or Smooth Cowl</i>	Part # 64380.000	\$4995.00
<i>Series 5, 6, 7 &amp; Super Sport STi - Smooth Cowl Only</i>	Part # 64833.000	\$4995.00
<i>Series 5, 6, 7 &amp; Super Sport (914 -Smooth Cowl Only)</i>	Part # 64834.000	\$5995.00

## Rotax 912iS Fuel Injection Engine Component Kit 100 HP

<i>Series 5,6,7, SS &amp; STi Smooth Cowl only</i>	Part # 64835.000	\$6859.00
<i>Ring Mount &amp; Exhaust 912iS sold w/engine purchase only</i>	Call for Quote	\$Call

## Rotax 915iS Turbo Charged Fuel Injection Engine Kit

<i>Series 5,6,7,SS &amp; STi</i>	Part # 64836.000	\$8995.00
----------------------------------	------------------	-----------

### Pre-Assembled Hose Kits

Available for 915/916iS & 912iS Engines.  
 Fuel & Oil lines pre-assembled  
 Teflon hoses and all AN fittings complete and ready  
 to install. Also available as an upgrade cost  
 to the Firewall Forward Kits..



<i>Pre-Assembled Hose Kit 912iS</i>	Part # 98306.912	\$935.00
<i>Pre-Assembled Hose Kit 915/916iS</i>	Part # 98307.915	\$1150.00

## New Fuel Pump Manifold & Housing for 915 & 916iS Includes housing, fittings & hardware.

Requires customer assembly -Does not include pumps or check valves

Front View Assembled  
 Shown here file photo assembled



Rear View Assembled ready  
 to bolt to Firewall



<i>Fuel Pump Housing 915/916iS</i>	Part # 98340.000	\$895.00
------------------------------------	------------------	----------

Kitfox Aircraft, LLC

ORDER PARTS—Ph. (208) 337-5111 / Fax (208) 337-5116 / Email - [orderparts@kitfoxaircraft.com](mailto:orderparts@kitfoxaircraft.com)

ALL PRICES ARE SUBJECT TO CHANGE WITHOUT NOTICE

# Engine Options

Engine Options



## Engine Mount Kit M 3-4 Rotax 912 / 912ULS

This engine mount kit fits the round or smooth cowl for **Model 3 or 4** and includes all hardware, bushings, isolators, adapter arms & engine mount.

**Specify round or smooth cowling**



Replacement Isolator Kit M3-4 Rotax 912

Model 3 or 4 Rotax Engine Mount Kit	Part # 40050.000	\$999.00
Model 3 or 4 Rotax Isolator Kit	Part # 64804.000	\$125.00
Rubber Isolator Large Rotax 912 8 typical	Part # 44023.000	\$10.00 ea
Rubber Isolator Small Rotax 912 4 typical	Part # 44024.000	\$9.00 ea

## Other Firewall Forward Kits Available

### Basic Firewall Forward Kits Available for Series 5,6,7 Super Sport & STi

**Continental O-200, Lycoming O235 & O233, UL350iS, Continental XO340 & Rotec R2800 Radial**

**Engine Mount, & Hardware, Firewall & Rivets, Cowlings & Camlocs, Oil Tank –Rotec Radial only. CALL FOR INFORMATION & CURRENT PRICING**



**157KS  
Series 7 Speedster**

Kitfox Aircraft, LLC

ORDER PARTS—Ph. (208) 337-5111 / Fax (208) 337-5116 / Email - [orderparts@kitfoxaircraft.com](mailto:orderparts@kitfoxaircraft.com)

ALL PRICES ARE SUBJECT TO CHANGE WITHOUT NOTICE



# Engine Options

## Oil Cooler Kit 912 / 912ULS / 914 / 915iS Series 7

Rotax recommends an oil cooler on all 912UL Engines and highly recommends one on the 912ULS or 914. This custom oil cooler is designed to fit inside your Kitfox Super Sport smooth cowls and will lower your oil temperature 20-30 degrees. 0 Degree fittings included in kit. 45 and 90 degree fittings also available.



Oil Cooler Kits 912iS/912ULS or 914	Part # 64975.500	\$395.00
Larger Oil Cooler -912iS-915iS-916iS or 914 Cooler only	Part # 91510.000	\$210.00
45 or 90 Degree Fittings	Part #s 73119.200 or 73119.300	\$40.00

## Remote Oil Pressure Kit

Kit does not include sender.



Kit	Part # 73500.000	\$102.00
VDO Sender	Part # 98077.000	\$70.00

## Cowl, Oil Refill Access Door Kit

This handy access door can be mounted just about anywhere in your cowl for quick, easy access for your oil tank , for Lycoming, Rotec or Continental Style Cowlings

Oil Refill Door Kit	Part # 69055.101	\$50.00
---------------------	------------------	---------

## Aluminum Header Tank Kit

Header tank kit, includes quick drain, vapor return, flanges, fittings, and all necessary hardware. Appx 1 us gal



Header Tank Kit	Part #10018.101	\$380.00
Header Tank Only	Part # 74005.301	\$299.00

# Engine Options

Engine Options

## Fuel Return Kit

Newer Rotax 912ULS engines has fuel return port that is routed back to the header tank.



Fuel Return Kit 912 ULS	Part # 98109.000	\$220.00
-------------------------	------------------	----------

## Heater Kits

Dual Cabin Heater Kit for Rotax 9 series engines. Series 5, 6, 7 Super Sport or STi  
Also available for Model 3 & 4

Heater Kit Dual Series 5, 6, 7, & Super Sport	Part # 10076.500	\$580.00
Heater Kit Single Model 3 & 4	Part # 69014.000	\$495.00

## Smoke System Kit

Add a little fun to your flying. Don't just show them.....smoke them! Great for weekend fun or marking your position in the air for those friends or family on the ground. This smoke system will work with almost any engine. System includes removable oil tank, oil pump, injector nozzle, hardware and instructions.

Smoke System Package	Part # 10633.000	\$399.00
----------------------	------------------	----------

## Radiator Scoop Kit

Add the finishing touch to your Kitfox Model 3 or 4  
Designed to fit the original Rotax 912 Radiator  
On the belly of the fuselage. Reduce Drag &  
Increase speed.  
Use with the larger radiator will require modification.



Radiator Scoop Kit	Part # 69137.000	\$235.00
--------------------	------------------	----------

## Decalin Runup— Lead Scavenger Fuel Additive

Lead Scavenger—Treats up to 320 Gallons of 100LL.  
Easy to dispense bottle with no syringes and safe to carry in the cockpit.



Decalin Runup—16 oz	Part # 3002-SP	\$27.50
---------------------	----------------	---------

Kitfox Aircraft, LLC

ORDER PARTS—Ph. (208) 337-5111 / Fax (208) 337-5116 / Email - [orderparts@kitfoaircraft.com](mailto:orderparts@kitfoaircraft.com)

ALL PRICES ARE SUBJECT TO CHANGE WITHOUT NOTICE

# Engine Options

## Radiators (Aluminum)

Model 3 & 4 Standard— Rotax 912UL 80Hp	Part # 45054.701	\$435.00
Model 3 & 4 Oversized— Rotax 582 & 912ULS	Part # 45058.701	\$435.00
Series 7 & Super Sport— Rotax 912ULS, 912iS, 914, 915iS	Part # 54016.701	\$435.00

## Throttle Cables

This is specifically designed for use with the Rotax '9 Series' engines. Specify model and engine type when ordering.



Model 2, 3, 4 - 912 engines	Part # 99006.000 A	\$265.00
Series 5, 6 - 912 engines	Part # 99006.000 B	\$265.00
Series 7, Super Sport 912 engines— Smooth Cowl	Part # 99003.000	\$262.00
Rotec R2800—Throttle Cable—Single lead	Part # 99011.000	\$262.00
Rotax 912iS 915iS Single Lead Vernier Style	Part # 99004.000	\$275.00

D-Ring Choke Kit—Model 5, 6 & 7—mounts under panel	Part # 64932.000	\$65.00
D-Ring Choke Kit—Model 4—mounts under panel	Part # 64968.000	\$65.00
Carb Heat Cable— for Rotax Airbox	Part # 99010.000	\$155.00
Choke— twin lead panel mount	Part # 99005.000	\$155.00

## Fuel Valves

Model 3 & 4



Series 5, 6, 7



Fuel Valve Series 5, 6, 7, Super Sport	Part # 64319.000	\$140.00
Fuel Valve Model 3, 4 (Denny#WT6) 1/4	Part # 29001.300	\$85.00

## Reinforced exhaust system for the Rotax 912/912 ULS engine Model 3, 4, Series 5, 6, 7, Super Sport & STi

**CURRENTLY  
UNAVAILABLE**

NA		\$ NA
Exhaust Springs	Part # 43016.000	\$4.00

# Engines

Engines

## Heavy Duty Engine Mount for Rotax 912ULS/912iS or 915iS/916iS engine

### Model 3, 4 and Series 5, 6, 7, Super Sport , STi

Specify model, engine and cowling type. Powder coated white.  
Please call for information on other mounts (Lycoming, Continental, Jabiru, or Rotec).

Series 7 Super Sport STi Speedster 912/912iS/914	Part # 54059.101	\$675.00
Series 7 Super Sport STi Speedster 915iS/916iS	Part # 54059.501	\$675.00
Model 3 and 4 round cowling	Part # 45062.000	\$625.00
Model 3 and 4 smooth cowling inc oil tank brkts	Part # 54057.101	\$625.00
Model 3 and 4 adapter arms	Part # 45006, 45007, 45040, 45059	\$92.00 ea.

## Rotax 912 UL 2 Aircraft Engine

(suitable for fixed pitch propeller)  
Non-Certified  
Continuous Performance:  
58kw (79hp) @ 5500 rpm  
Take off Performance:  
59.6kw (81hp) @ 5800 rpm (max 5min.)  
Four-cylinder engine, liquid & air cooled cylinder heads,



*Call for availability and current pricing information.*

## Rotax 912 ULS 2 Aircraft Engine 100 HP

(suitable for fixed pitch propellers)

Same as Rotax UL2 except for performance figures below:  
Continuous Performance:  
69.6kw (95hp) @ 5500rpm  
Take off Performance:  
73.6kw (100hp) @ 5800rpm (Max 5min.)



*Call for availability and current pricing information.*

## Rotax 914 UL Aircraft Engine

(Comes in same UL 2 configurations as the 912 UL & ULS)

Continuous Performance: 73.5kw (100hp) @ 5500rpm  
Take off Performance: 84.5kw (115hp) @ 5800rpm (Max 5min)



*Call for availability and current pricing information.*

Kitfox Aircraft, LLC

ORDER PARTS—Ph. (208) 337-5111 / Fax (208) 337-5116 / Email - [orderparts@kitfoxaircraft.com](mailto:orderparts@kitfoxaircraft.com)

ALL PRICES ARE SUBJECT TO CHANGE WITHOUT NOTICE





## Rotax 912iS—Fuel Injection 100HP

The New 4-stroke, 4-cylinder 100 hp aircraft engine with a redundant electronic fuel injection system is a first in the industry. It makes it ideal for all kinds of light sport aircraft. An evolution of the Rotax 912 engine, the 912 iS engine delivers 38% to 70% better fuel efficiency than comparable engines in the light sport category. **REQUIRES Electronic EMS.**



*Call for availability and current pricing information.*

## Rotax 915iS-Turbo Charged Fuel Injection

**140HP**

Based on the proven concept of the Rotax 912 / 914 engine series, the Rotax 915 iS engine offers more power, the best power-to-weight ratio in its class, full take-off power up to 15,000 feet (4,570 m) and a service ceiling of 23,000 feet (7,010 m). **Type 3 for Variable Pitch Prop**



*Call for availability and current pricing information.*

## Rotax 916iS-Turbo Charged Fuel Injection

**160HP**

Dynamic, turbocharged iS engine with best power-to-weight ratio TBO 2,000hr. Four-stroke piston engine with four liquid and Air-cooled cylinders, Redundant electronic fuel injection and ignition, eco mode. Type 3 for Variable Pitch Props



*Call for availability and current pricing information.*

# Engines

Engines

## Continental O-200 Engine

The O-200 IS A 100 HP, CERTIFIED AIRCRAFT ENGINE. The engine is fan cooled, and time proven in many certified aircraft.



*Call for information.*

## Continental Titan XO 340 180HP

The Titan™ 340 is unlike any other engine offered. This small stroked 320 can generate over 180hp yet weighs 20lbs less than a standard 360 model.



*Call for information.*



Not so long ago, when I was a student in college, just flying an airplane seemed a dream. But that dream turned into reality.

Charles A. Lindbergh

Kitfox Aircraft, LLC  
ORDER PARTS—Ph. (208) 337-5111 / Fax (208) 337-5116 / Email - [orderparts@kitfoxaircraft.com](mailto:orderparts@kitfoxaircraft.com)  
ALL PRICES ARE SUBJECT TO CHANGE WITHOUT NOTICE

# Engines

Engines



## Lycoming O-233 YO Engine

HP 115 @ 2800 RPM, TBO 2400 hrs.,  
Dual CDI Spark Ignition, carburetor or fuel injection,  
light weight starter and alternator with integral voltage  
regulator, Dynafocal Engine Mount.



*Call for information.*

## Lycoming O-235 Engine

The O-235 N2C has maximum continuous horse power of 116  
and a max R.P.M. of 2800. The recommended TBO  
for this engine is 2400 hours. This is a four cylinder,  
certified aircraft engine. Requires a dynafocal type 1 mount,  
included with the Kitfox installation package.



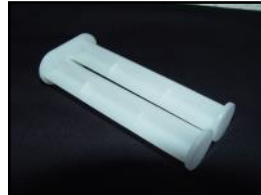
*Call for information.*

**Kitfox Aircraft, LLC**  
ORDER PARTS—Ph. (208) 337-5111 / Fax (208) 337-5116 / Email - [orderparts@kitfoxaircraft.com](mailto:orderparts@kitfoxaircraft.com)  
ALL PRICES ARE SUBJECT TO CHANGE WITHOUT NOTICE

# Epoxies & Adhesives

## Hysol Structural Adhesive

A high quality, two part structural adhesive. Can be used for any structural epoxy job on your Kitfox. Has a 1:1 mix ratio. Part "A" and "B" in quart cans or 50 ml tubes. Hand plunger and nozzles available.



EA 9460 2-1qt cans	Part # 01139.000	\$195.50
9460 50 ml. tube	Part # 32733.000	\$30.00
Hand Plunger for 50 ml. tube	NO LONGER AVAILABLE	0
Mixing Nozzles for 50 ml. tube	Part # 10540.000	\$2.50

## Dow Corning Silicone



DC #739 RTV Silicone 10 oz.	Part # 10063.000	\$30.00
-----------------------------	------------------	---------

## Loctite Products



Loctite 242 Thread locker 0.5 ml Capsule	Part # 64196.000	\$4.00
Loctite 680 Retaining Compound 0.5 ml Capsule	Part # 64196.101	\$4.00

## Permatex 85420 Permashield Replacement for Permatex 9AR

Fuel Resistant tack seal for fuel fittings.



Permatex 85420 Permashield	Part # 64195.101	\$24.00
----------------------------	------------------	---------



# Fiberglass

Fiberglass

## ROTAX Round Cowlings for Model 3 and 4—Special Order Only

4 Part (Top & Bottom Rear / Top & Bottom Rings)	Part # 44009.000 4 PC Round	\$1,250.00
---	-----------------------------	------------

## ROTAX Smooth Cowlings for Model 3 and 4—Special Order Only

2 Part (Top & Bottom)	Part# 74016.201 & 501	\$1000.00
-----------------------	-----------------------	-----------

## ROTAX Series 5, 6, 7, Super Sport ,STi, Speedster

Smooth Cowling -5 Part (Boot,Top,Bottom,Naca,Oil Door)	Part # 74017.000	\$1500.00
Round Cowling - 2 Part (Top & Bottom)	Part # 10007.000 & 10006.000	\$1200.00

## Air Intake Retro Fit -Rotax 912iS

For 912iS needing additional cooling



Air Intake Retro Fit	Part # 98309.000	\$ 225.00
----------------------	------------------	-----------

## Additional Cowlings Available—Series 5, 6, 7, SuperSport STi & Speedster

All Cowlings are available in Standard Resin or Carbon

<b>Lycoming O-235 Top &amp; Bottom</b>	Part # 74010.502- & 503	Part # 1300.00
--	-------------------------	----------------

<b>Lycoming O-233 Top, Bottom, Boot, Naca, Shroud</b>	Part # 74010.000	Part # 1650.00
---	------------------	----------------

<b>Continental O-200 Top &amp; Bottom</b>	Part # 74010.502- & 503	Part # 1300.00
---	-------------------------	----------------

<b>UL 350iS Top, Bottom &amp; Boot</b>	Part # UL35iS	Part # 1400.00
--	---------------	----------------

<b>Rotec Radial 2800 Top, Bottom, Boot, Intake, Plenum</b>	Part # 1000000.99	Part # 1595.00
<b>Rotec Front, Rings Bump Cowling</b>	Part # 100000.520 & 521	Part # 1395.00

Carbon Cowling upgrade with Engine Component Kit	Carbon	\$1,850.00
Carbon Cowling only without Engine Component Kit	Carbon	\$3150.00

**Rotax Cowling Set  
Standard Resin**



**Carbon**



Kitfox Aircraft, LLC

ORDER PARTS—Ph. (208) 337-5111 / Fax (208) 337-5116 / Email - [orderparts@kitfoxaircraft.com](mailto:orderparts@kitfoxaircraft.com)

ALL PRICES ARE SUBJECT TO CHANGE WITHOUT NOTICE

# General Items

General Items

## Cabin Vent System

Includes: 2" eyeball vent, NACA, and ducting—3ft. Eyeball vent is black anodized aluminum.



Cabin Vent System Kit Pair	Part# 73502.000	\$500.00
----------------------------	-----------------	----------

## Butt Rib to Fuselage Closeouts

Close out the area between your butt rib and fuselage. Sold as a pair.



Model 5, 6, 7, Super Sport, STi, Speedster	Part # 73503.000	\$75.00 pair
--	------------------	--------------

## Parking Brake

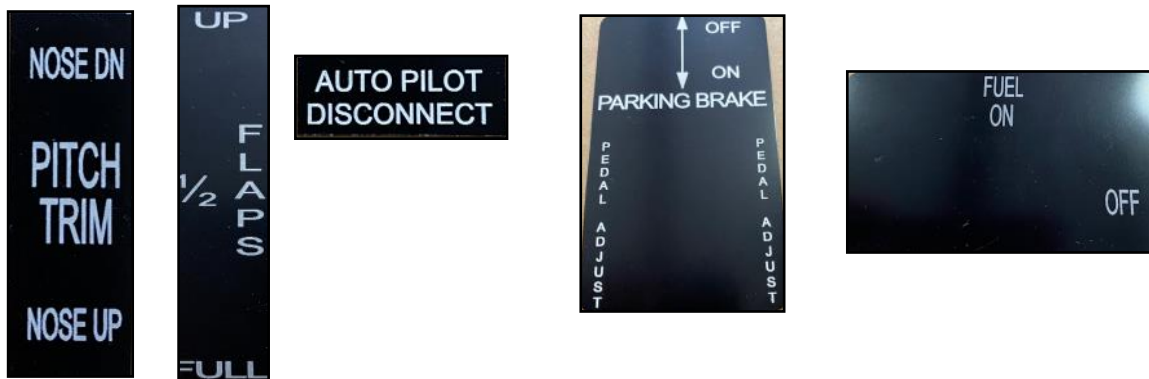
Picture shows one way to install in Series 5 and later models with a center console. ID-Plate included.



Kit: Valve, 2 straight fittings, 2 - 90 degree fittings, hardware and 10' tubing

All Models— Kit	Part # 98069.500	\$555.00
-----------------	------------------	----------

## Placards, Aluminum and Engraved



Pitch Trim Nose UP/Down	Part # 98326.000	\$12.00
Flap Position	Part # 98327.000	\$12.00
Parking Brake/Adjustable Rudder Pedals	Part # 98128.000	\$12.00
Auto Pilot Disconnect	Part # 98328.000	\$12.00
Fuel Selector	Part # 64343.101	\$15.00

**Kitfox Aircraft, LLC**  
 ORDER PARTS—Ph. (208) 337-5111 / Fax (208) 337-5116 / Email - [orderparts@kitfoxaircraft.com](mailto:orderparts@kitfoxaircraft.com)  
ALL PRICES ARE SUBJECT TO CHANGE WITHOUT NOTICE

# General Items

General Items

## **New Heavy-Duty Stabilizer Strut Kit for Model 3 & 4**

5/8" O.D. with 1/4" thread for Model 3 and 4 horizontal stabilizers struts.  
 Developed to meet European certification requirements.  
 Replaces old style V shaped struts . Includes new rod ends & hardware.

Model 3 and 4	Part # 10581.000 (Kit)	\$450.00
Powder coating	Specify Color	\$50.00

## **Larger Elevator** **Model 3, 4 and Lite<sup>2</sup> (squared) No Trim Option**

Designed for the tri-gear version of the Kitfox Lite<sup>2</sup>, but suitable for earlier Kitfox's. This new elevator improves flare authority with a full flap, forward CG condition.  
 Powder coating available for additional charge. Price is for elevator only.

Model 3 and 4 and Lite <sup>2</sup>	Part # 51018.201	\$675.00
Powder coating	Specify Color	\$50.00

## **New Larger Elevator– Electric Trim Option** **Model 3, 4 and Lite<sup>2</sup> (squared)**

Designed to replace an existing elevator that is using an electric trim system. Powder coating available for additional charge. Price listed is for elevator only.

Model 3 and 4 and Lite <sup>2</sup>	Part # 51018.301	\$725.00
Powder coating	Specify Color	\$50.00

## **Horizontal Stabilizer & Elevator Rib Kit** **(For Electric Trim option)** **Model 3, 4 and Lite<sup>2</sup> (squared)**

Replacing your elevator with the new larger one with the trim option will require the ribs to be installed into the elevator prior to covering .

Model 3,4 & Lite <sup>2</sup>	Part # 10172.000 (Kit)	\$265.00
-------------------------------	------------------------	----------

## **Reinforced Rudder Pedal Toque Tubes** **Model 4 and Lite<sup>2</sup> (squared)**

Model 4 and Lite <sup>2</sup> RIGHT	Part # 35009.000	\$250.00
Model 4 and Lite <sup>2</sup> LEFT	Part # 35008.000	\$250.00
Powder coating	Specify Color	\$50.00

## General Items

General Items

### Rudder Pedal Reinforcement Kit

Reinforce your old style rudder pedals that do not have the gussets on the rudder pedal torque tubes. Available for Model 1, 2, 3, 4 & S5, Vixen

Rudder Pedal Reinforcement Kit - M1-M4	Part# 35015.000	\$230.00
Rudder Pedal Reinforcement Kit S5 & VXN	Part# 10210.000	\$185.00

### PUKA Pedals

#### Series 5, 6, 7 Super Sport & STi, Speedster Only

*(pooh-kah) Hole Opening*

Upgrade your flat style pedal to the new lighter version PUKA Pedal. Eliminates the need for non-skid material on your flat style pedal and save 1/2 pound. Pricing for the pedal only. Hardware not included but available.



PUKA Pedal (set of 4)	Part # 35024.102	\$325.00
Powder coating	Specify Color	\$50.00

### Model 3 & 4 C or E –Style Dual Brake Kit

Add right side brakes to your Kitfox Model 3 or Model 4. Also Available is the C—Style Brake kit for earlier models.

E Style Dual Brake Kit	Part # 69139.000	\$650.00
C Style Dual Brake Kit	Part # 69056.000	\$650.00



Jean-Francois Naud  
Quebec Canada

Kitfox Aircraft, LLC

ORDER PARTS—Ph. (208) 337-5111 / Fax (208) 337-5116 / Email - [orderparts@kitfoxaircraft.com](mailto:orderparts@kitfoxaircraft.com)

ALL PRICES ARE SUBJECT TO CHANGE WITHOUT NOTICE



## General Items

General Items



**12KA Rotec Radial**



**Neil Ring MIV  
Rotec Radial**

Kitfox Aircraft, LLC  
ORDER PARTS—Ph. (208) 337-5111 / Fax (208) 337-5116 / Email - [orderparts@kitfoxaircraft.com](mailto:orderparts@kitfoxaircraft.com)  
ALL PRICES ARE SUBJECT TO CHANGE WITHOUT NOTICE

## General Items

General Items

### Flight Control System Model 3--Special order Kit..

Convert your Kitfox Model 3 to a differential flight control system now used on Model 4 and later Kitfox aircraft.

Requires upgrade to Model 4 Wing and Flaperon not included. **Special Order Only**

Model 3	Part # 19065.000	\$3,600.00
---------	------------------	------------

### Flap/Elevator Interconnect, Trim Assist Kit Series 5, 6, 7, Super Sport ,STi, Speedster Only

Helps reduce aft stick forces when making slow approaches to land.  
Specify Model

Series 7, SS & STi	Part # 09034.000	\$145.00
Series 5 & 6	Part # 09034.500	\$145.00

### Streamline Horizontal Struts and Wing Lift Struts Available for Series 5, 6, 7, Super Sport, and STi

Struts are manufactured from 4130 chromoly steel and powder coated.

Streamline Horizontal Stabilizer Struts	Part # 15160.000	\$275.00 ea.
Streamline Wing Lift Struts	Part # 52004.701 LFT # 52004.702 RGT	\$1,850.00ea.

### Wing Lift Struts Model 3, Model 4, Series 5, 6, 7, Super Sport, STi, Speedster

4130 Chromoly steel round tube  
Fairing Kit, Gives your round strut the airfoil shape  
For increase cruise speeds.  
(Speeds will vary based on model type and engine)

1" x .049 Wall Lift Strut (Model 3 or Model 4)	Part# 25020.000 LFT / 25021.000 RGT	\$600.00 ea.
1" x .065 Wall Lift Strut (Series 5, 6, 7, SS, & STi)	Part# 52004.201 LFT / 54004.202 RGT	\$600.00 ea.
Model 1 & 2 Lift Struts <b>are special order only</b>	Call for details	\$850.00 ea.
Lift Strut Fairing Kit fits 1" Round Lift Struts	Part # 69119.000	\$395.00

# Hardware

\*\*\*\*These hardware kits are designed for the builder.  
Please contact us to order replacement hardware.\*\*\*\*

## Wing Hardware Kit

Rivets, Fittings, Grommets, Common Nuts, Bolts and Washers.

Non-Quick Build Wing Hardware Kit Series 5,6 ,7 & SS	Part # 64943.218	\$250.00
--	------------------	----------

## Fuselage Hardware Kit

Rivets, Fittings, Pulleys, Grommets, & Common Nuts, Bolts and Washers.

Series 5, 6, 7 & SS	Part # 64984.218	\$675.00
---------------------	------------------	----------

## Rod Ends for Wing Lift Struts

Others types are available, please call.

Wing Lift Strut Rod Ends Male (Series 5, 6, 7, SS, & STi)	Part # 90072.000	\$53.00ea.
Wing Lift Strut Rod Ends Female (Classic 4 - 1200)	Part # 23012.000	\$59.95 ea.
Rudder Rod Ends Male (Series 5, 6, 7, SS, & STi)	Part # 93001.000	\$35.00ea.



Pilot: The T/C ball seemed stuck in the middle during my last turn.  
Mechanic: Congratulations! You've just made your first coordinated turn.

# Headsets

Headsets

## Bose Headsets

Enjoy full-spectrum noise reduction, comfortable fit and clearer reception when you fly with the Bose Aviation Headset X. Thanks to proprietary TriPort headset technology, this unique combination of benefits is available in one lightweight headset. The redesigned control module and greater usability make the #1 headset choice of many pilots and military personnel even better.



Bose Headset A-30 Bluetooth capable or NON	Part # A-30	\$1249.00
Specify Plug Style	GA, Lemo, or Helo	

Man's flight through life is sustained by the power of his knowledge.



**Our Russian Kitfox Flyer**

**Yuri Rulin**



# Landing Gear

Landing Gear

## Classic Model 4 Landing Gear Package—Tube Gear-Special order Only

Left & Right gear legs, master cylinders left side 'E' Style brake pedals  
 Right side brakes available, 600 x 6 tires & tubes, 3/4" axles, shock bungee cords  
 Matco wheel & brake assembly, Matco tailwheel kit, all hardware required.

Items also sold separately. **Special Order Item**

Tube Landing Gear Kit	Part # 10152.000	\$4500.00
-----------------------	------------------	-----------

## Model 3 or 4 Cabane Style Bush Gear

Axles are sold Separately  
 Specify Type  
 Tires, Wheels & Brakes not included



Model 3/4 Cabane Coil Spring Bush Gear	Part # 13050.000	\$2155.00
Axle W62 3/4" 6" Wheel	Part # 5012	\$175.00
Axle ATV Style 8" Wheel	Part # 5011	\$175.00

## Aluminum Spring Gear Package

For Series 6, 7, & Super Sport  
 Includes complete Landing Gear System:

Grove Aluminum Spring Gear  
 Install Kit with hardware  
 2 Master cylinders  
 Grove Wheel and Brakes  
 Axles 1.25"  
 Matco TW Single Arm Kit  
 600 x 6 tires and tubes  
 \*\*\*Upgraded TW Springs, TW Assem & Larger Tires



Also available for Series 5, Vixen, Outback, Voyager

Series 6, 7, & Super Sport	Part # 64942.B	\$7500.00

# Landing Gear

Our Bush Gear utilizes bolt on axles. This a for the versatility to use different axle sizes

Landing Gear

## Bush Cabane Coil Spring Gear Series 5,6,7, Super Sport, STi



Coil Spring Gear Series 5-7 Super Sport , STi



Black Ops/Pro Series Acme Shock

STi Gear with Black ops Nitro Shocks

Black Op's Acme Shock	Part # 98319.000	\$1725.00 ea
Pro Series Acme Shock	Part # 98320.000	\$2040.00 ea
Series 5 Cabane Coil Spring Gear System	Part # 13056.000	\$2950.00
Series 5 Shock Acme Retro Fit gear parts & shocks only	Part # 13056.999	\$5500.00
Series 6, 7, & SS, STi Cabane Coil Spring Gear System	Part # 13055.000	\$6900.00
Series 6, 7, & SS, STi Cabane with Acme Shock <sup>^^^</sup>	Part # 13055.900	\$12750.00
Series 6, 7, & SS ,STi Cabane for Acme Shock Retro <sup>***</sup>	Part # 13055.799	\$5500.00

<sup>^^^</sup> Acme Shock Gear Complete System  
 Gear legs, cabane, nitrogen charged Black Ops Shocks ,  
 Grove heavy duty wheel & brake, aluminum tail wheel spring,  
 Alaskan Bush ABI 3224 tail wheel, & all hardware  
 Excludes tires & covering materials

<sup>\*\*\*</sup> Retro Fit Kit  
 Gear legs, Cabane, Acme Shocks & all mounting hardware

Kitfox Aircraft, LLC

ORDER PARTS—Ph. (208) 337-5111 / Fax (208) 337-5116 / Email - [orderparts@kitfoxaircraft.com](mailto:orderparts@kitfoxaircraft.com)

ALL PRICES ARE SUBJECT TO CHANGE WITHOUT NOTICE

allows  
and types.

# Landing Gear

Landing Gear

## Matco Tailwheel Assembly

- Tailwheel kit includes TW, 3 Leaf steel TW spring, clips, chain, hardware.



8" Pneumatic - Tailwheel only-Single Arm	Part # 39013.KFA	\$440.00
Tailwheel Kit - Matco 8" Pneumatic single arm	Part # 69261.000	\$635.00

## Alaska Gear Co. Tailwheel Assembly

Price does not include shipping from AK



Airframes AL Standard ABI 3224A Kitfox	Part # ABI-3224A	\$1750.00
TW Leaf Spring Adapter to 1.25"	Part # 98199.000	65.00

## Tailwheel Springs

3 leaf steel spring (does not include mounting hardware)



T3 Spring

Series 5, 6, & 7	Part #13022.101	\$149.00
Model 1, 2, 3, & 4	Part #13022-135	\$149.00
Alaska Gear Co T-3 Tailwheel Spring 4,5,6,7 SS	Part # T-3 ABI-51-376	\$900.00

## Heavy Duty TW Suspension Systems



Aluminum Spring Acme Aero



Acme Stinger TW Suspension System w/Bracket	Part # 98021.000	\$2080.00
Aluminum Tail Wheel Spring & Radius Brackets	Part # 98172.101	\$350.00
Aluminum Tail Wheel Spring w/mounting Hardware	Part # 98172.000	\$399.00
Compression Spring Kit	Part # 98172.500	\$65.00

Kitfox Aircraft, LLC

ORDER PARTS—Ph. (208) 337-5111 / Fax (208) 337-5116 / Email - [orderparts@kitfoxaircraft.com](mailto:orderparts@kitfoxaircraft.com)

ALL PRICES ARE SUBJECT TO CHANGE WITHOUT NOTICE

# Landing Gear

Landing Gear

## Nose Gear Kit

You can order the nose gear kit in addition to the standard tailwheel package to allow you to switch between both gear options.  
Also available for Series 5 Vixen & Voyager only.  
Call for pricing and availability.



Series 6, 7, & Super Sport	Part # 64257.000	\$2010.00
Powder Coating	Specify Color	\$100.00

## Grove Wheel & Brake Kit These items have long lead times.

Fits 1.25" Axles

600 x 6 Dual Piston—For Larger Tires	Part# 65-131 Aluminum	\$2,600.00
600 x 6 Dual Piston— For Larger Tires	Part# 65-231 Magnesium	\$2,800.00
500 x 5	Part# 51-201 Magnesium	\$2,800.00

## Alaska Gear Co - Bush Wheel

*Price listed does not include shipping from Alaska*



26 x 12 x 6 Airstreak	Part # 26126.R1	\$3,000.00 pair
29 x 13 x 6 Airstreak	Part # 29136.R1	\$3,460.00pair

## Aero Classic Tires



Tire 850/6/4 Ply Smooth Tire (22")	Part # 98215.000	\$449.00ea.
Tire 21/800-6 Treaded Tundra	Part # 98216.000	\$190.00 ea.
Tube 850/6 TU 850/6	Part # 98215.101	\$102.00 ea.

**Kitfox Aircraft, LLC**  
ORDER PARTS—Ph. (208) 337-5111 / Fax (208) 337-5116 / Email - [orderparts@kitfoxaircraft.com](mailto:orderparts@kitfoxaircraft.com)  
ALL PRICES ARE SUBJECT TO CHANGE WITHOUT NOTICE



# Landing Gear

Landing Gear

## Hub Caps



Aluminum



Carbon Fiber



Engraved Top Cap

Hub Cap Fits 600 x 6 Wheel Unpainted	Part # 97012.000	\$30.00 ea.
Hub Cap - Carbon Fiber	Part # 97012.202	\$30.00 ea.
Black Anodized Top Cap NO LOGO Engraved	Part # 97012.101	\$30.00 ea.
Black Anodized Top Cap Engraved Kitfox	Part # 97012.501	\$44.00 ea.

## Bob and Vivian Olson Twin Bridges MT



You haven't seen a tree until you've seen its shadow from the sky.

Kitfox Aircraft, LLC  
 ORDER PARTS—Ph. (208) 337-5111 / Fax (208) 337-5116 / Email - [orderparts@kitfoxaircraft.com](mailto:orderparts@kitfoxaircraft.com)  
 ALL PRICES ARE SUBJECT TO CHANGE WITHOUT NOTICE

# Landing Gear

Landing Gear

## Axles

These axles are bolt-on axles used on the Grove aluminum spring gear and the current style tube Bush gear.  
They are available for Grove, Matco or the original ATV style Kitfox wheels.



1.25" diameter—Typical for the S5 to the SS	Part # 13012.101	\$125.00 ea.
0.75" diameter—Typical for the Original ATV style	Part # 5011	\$135.00 ea.
0.75" diameter—Typical for the earlier Matco wheels	Part # 5012	\$120.00 ea.
0.75 diameter—Original axle for tube gear 18" piece	Part # 33000.000	\$75.50 ea.

## Axle Taper Shims

Ideal for wheel alignment problems when installing your spring gear.  
Shims may be rotated to any one of four positions to obtain proper toe-in camber.  
Available in four separate degree variations.



0.5 degree	Part # 13028.100	\$20.00
1.0 degree	Part # 13028.101	\$20.00
2.0 degree	Part # 13028.102	\$20.00
3.0 degree	Part # 13028.103	\$20.00

# Landing Gear

Landing Gear

## Wheel Pant Kits



Classic 4 Spring Gear Wheel Pant Kit Mains	Part # 69351.000	\$600.00
Series 5, 6, 7, & SS Spring Gear Main Wheel Pant	Part # 64326.000	\$525.00
Series 6, 7, & SS Nose Gear Wheel Pant Kit	Part # 64354.500	\$300.00



The fascination of flight can't be expressed with words. But it really lies beyond the capabilities of human endeavor. Once you've experienced it, you'll never be able to forget it.

Friedrich Oblessor, 127 victories WWII

## Maintenance Items

Maintenance Items

### Oil Filter Rotax 912, 912ULS, 912iS, 914UL & 915iS

These Rotax oil filters are for use on the Rotax 912UL & ULS engines.  
Should be replaced every 50 hours.

Oil Filter - Rotax 912 / 914 Series	Part # 46032.000	\$22.22
-------------------------------------	------------------	---------

### Fuel Filter Rotax 912, 912ULS, 912iS, 914UL, 915iS

Fuel Filter Rotax 912iS Bosch 8 Micros	Part # 98242.000	\$22.00
Fuel Filter Rotax 912/ULS/912iS/914 60 Microns	Part # 98183.000	\$32.00
Fuel Filter Bracket Billet 912ULS/912iS/914	Part # 98183.101	\$26.99

### Spark Plugs - Spark Plugs for your Kitfox.

Rotax 912 80 HP NGK	Part # 46026.000	\$5.00
Rotax 912ULS 912iS 100 HP NGK	Part # 64276.000	\$5.00
Rotax 914 Turbo Denso	Part # 47024.000	\$5.00
Rotax 915iS /916iS Spark Plugs	Contact your local Rotax Service Center	NA

### Fuel Cap

Fuel Caps with 1/8" rubber gaskets and vent tube.



Fuel Cap with Gaskets	Part # 27012.000	\$32.00
Gasket, for replacement	Part # 27012.101	\$4.50

### Fuel Manifold



Manifold for 1/8 NPT pressure sender port	Part # 98254.000	\$175.00
Manifold for M10 pressure sender port Metric Tap	Part # 98254.201	\$175.00



# Maintenance Items

Maintenance Items

## K & N Air Filter Spray Oil

All Models	Part # 990516.000	\$22.00
------------	-------------------	---------

## K & N Air Filter Cleaner

All Models	Part # 990621.000	\$22.00
------------	-------------------	---------

## Air Filters

Kitfox Aircraft carries several high quality K&N & Unit Filter air filters for your engine choice.

Rotax with Air Box Series 7 912/914 RU800 K&N	Part # 64903.000	\$48.90
Rotax 915iS /916iS & 912iS Series 7 UNI Filter	Part # 91507.101	\$26.00

## Aero Shell Oil

Aeroshell Oil Sport Plus 4 is ideal as it is extremely resistant to the immense sheer forces that occur in areas of high-pressure contact such as high-speed gearboxes, valve trains, bearings, pistons and liners. This is where the blend of base oil and additives is most crucial.

Aeroshell Oil Sport Plus 4 (case of 12 liters)	Part # 98131.500	\$190.00 case
Aeroshell Oil Sport Plus 4	Part # 98131.000	\$15.85 Liter

## Shock Cords

Shock cords, like tires, wear out with time. We recommend you replace your shock cord (bungee cords) at every annual inspection to avoid costly damage later. Cords are complete with looped ends and ready to install. Specify model.



Model 1, 2, 3, 4, Lite <sup>2</sup> Tail Wheel	Part # 39008.000	\$140.00 pair
Other model & lengths available please call.	Special order only	

**Kitfox Aircraft, LLC**  
 ORDER PARTS—Ph. (208) 337-5111 / Fax (208) 337-5116 / Email - [orderparts@kitfoxaircraft.com](mailto:orderparts@kitfoxaircraft.com)  
ALL PRICES ARE SUBJECT TO CHANGE WITHOUT NOTICE

# Propellers & Spinners

## WHIRLWIND PROPELLERS

Whirlwind is a leader in the composite prop industry and has developed many new props.



### Whirlwind Kit, Continental, Lycoming, and Rotax 9 Series

Continental O-200/LYC 235 Composite GA 72"	Call For pricing	0
Continental 200L Stoll 616 76-82" 2 Blade	Cont/Lyc 150-180 hp Call for Pricing	0
Rotax 9 Series 3 Blade 70" Composite GA Prop only		\$2,220.00
Rotax 9 Series 3 Blade 75" Composite GA Prop only		\$2,350.00
11.3" Carbon Fiber Spinner	Part # 99015.000 Other sizes available	\$675.00
Rotax Whirlwind Prop Kit—70" ***	Part # 98228.000	\$3,525.00
Rotax Whirlwind Prop Kit—75" ***	Part # 98228.750	\$3,900.00

\*\*\* Kit includes ground adjustable prop, 11.3" spinner, Rotax drive lugs, and 2" spacer

## AIRMASTER PROPELLERS

The Airmaster propeller offers the electric constant speed performance for your aircraft. Available with Whirlwind, Kit includes: Hub, Controller, 2" Spacer, 11.2" Polished Spinner. Manufactured in New Zealand. Available with BETA Too..



AP332 ATF-WWL 70" 3 Blade Propeller Kit	Call for current pricing
AP430CTF-WWR72B KIT 915iS	Call for current pricing

# Propellers & Spinners

Propellers & Spinners

## Kitfox Light Sport Aircraft 357RC and 697KA



Kitfox Aircraft, LLC  
ORDER PARTS—Ph. (208) 337-5111 / Fax (208) 337-5116 / Email - [orderparts@kitfoxaircraft.com](mailto:orderparts@kitfoxaircraft.com)  
ALL PRICES ARE SUBJECT TO CHANGE WITHOUT NOTICE



## Propellers & Spinners

Propellers & Spinners



**Shahar Niv  
Kitfox Series 5**

I fly because it releases my mind from the tyranny of petty things.

Antoine de Saint-Exupéry



Kitfox Aircraft, LLC  
ORDER PARTS—Ph. (208) 337-5111 / Fax (208) 337-5116 / Email - [orderparts@kitfoxaircraft.com](mailto:orderparts@kitfoxaircraft.com)  
ALL PRICES ARE SUBJECT TO CHANGE WITHOUT NOTICE



# Propellers & Spinners

## DynaVibe— Dynamic Propeller Balancer

DynaVibe is an economical, state-of-the-art, dynamic propeller balancer designed specifically for the aircraft industry. DynaVibe displays the magnitude and phase of propeller vibration allowing for precise weight adjustments.



DynaVibe Dynamic Prop Balancer	Part # Dyna Vibe AC	Call
--------------------------------	---------------------	------

## Propeller Extensions

For Warp, Sensenich, or Whirlwind propellers



**\*\* Special Order Only**

2" Extension for Rotax S7 Smooth Cowl	Part # 14098.500	\$425.00
2" Extension for O-235 Lycoming SAE:1 **	Part # 14070.101-special order	\$call
4" Extension for O-200 Continental SAE:1 **	Part # 14061.101—special order	\$call
Crush Plate **	Part # 14061.301—special order	\$call
Bolts for above extensions	Specify extension	\$60.00 & up
2" Rotax prop extension kit for Warp drive prop **	Part # 64958.000	\$call
Collar Nuts for Rotax—Set of 6 drive lugs	Part # 69263.000	\$85.00

# Propellers & Spinners

## Spinner Kits

Assembled, balanced, ready to paint and install.  
Additional Sizes available—please call.



11.3" Composite Spinner for Whirlwind prop pre-cut	Part # 99015.000	\$675.00
9.75" Composite Spinner for Whirlwind prop pre-cut	Part # 99018.000	\$675.00



**Stan Specht—MIV Speedster**

The original Wright brothers aero plane is the world's first power-driven, heavier-than-air machine in which man made free, controlled, and sustained flight. Invented and built by Wilbur and Orville Wright flown by them at Kitty Hawk, North Carolina December 17, 1903. By original scientific research the Wright brothers discovered the principles of human flight as inventors, builders, and flyers. They further developed the aero plane, taught man to fly, and opened the era of aviation. Inscription next to The Flyer when it was unveiled at the Smithsonian in 1948.

Kitfox Aircraft, LLC

ORDER PARTS—Ph. (208) 337-5111 / Fax (208) 337-5116 / Email - [orderparts@kitfoxaircraft.com](mailto:orderparts@kitfoxaircraft.com)

ALL PRICES ARE SUBJECT TO CHANGE WITHOUT NOTICE

## Kitfox Builders Tool Kit

To assist you in the construction of your kit, we have assembled a tool kit for those hard to find tools. The tool kit, while not having every tool needed to build a standard kit, does supply many of the harder to find items so you will not have to spend your time searching for them.

- Reamer .1875
- Reamer .2500
- Reamer .3125
- Reamer .3750
- Reamer .4375
- Cleco Fasteners 3/32 (40)
- Cleco Fasteners 1/8 (40)
- Cleco Pliers
- De-Burring Tool
- Bit—Drill #30 short (3)
- Bit—Drill #40 short (3)
- Bit—Drill #30 Long 12"
- Bit—Drill #40 Long 12"
- Teflon Sheet
- Permashield Sealant
- Loctite RC 680
- Loctite Thread Locker 242
- Syringe Dispensing (2)
- Shears, Pinking (Gingher)
- Cups 3oz, no wax (10)
- Sticks, Stir (10)
- Hobby Iron
- Thermometer
- Hand Riveter, Squeeze, 2 way
- Acrylic Drill Bits — 1/4, 1/8 & 3/16



Complete Tool Kit

Part #64357.000

\$480.00

## Tow Bar Kit

Includes carry bag. Available for aircraft with wheel pants or without. Please specify. Tri-Gear only. Specify with or without wheel pants.



Kitfox Series 5, 7, & Super Sport tow bar kit

Part # Tow Bar Kit

\$299.00

Kitfox Aircraft, LLC

ORDER PARTS—Ph. (208) 337-5111 / Fax (208) 337-5116 / Email - [orderparts@kitfoxaircraft.com](mailto:orderparts@kitfoxaircraft.com)

ALL PRICES ARE SUBJECT TO CHANGE WITHOUT NOTICE

# Tools

Tools

## Cleco Pliers



Cleco Pliers	Part # 60022.000	\$10.50
--------------	------------------	---------

## Clecos

1/8" Clecos	Part # 60021.000	\$1.00 ea.
3/32" Clecos	Part # 60020.000	\$1.00ea.

## Cable Swaging Tool—Out of stock

Cable Swaging Tool 1/2 #2	Part # 60026.000	\$NLA
---------------------------	------------------	-------

## Deburring Tool



Deburring Tool	Part # 60023.000	\$15.25
----------------	------------------	---------

## Heat Sealing Fabric Iron



Hobby Iron	Part # 98249.505	\$45.00
------------	------------------	---------



# Tools

Tools

## Pinking Scissors - Gingher



Pinking Scissors	Part # 64194.000	\$69.00
------------------	------------------	---------

## Applicator Gun, 50ml 1/1

Works with Hysol 50 ml. tubes.  
(see epoxy section)



Applicator Gun	Part # 64175.000	\$45.00
Mixing Nozzles	Part # 10540.000	\$2.50

## Hand Riveter



Hand Riveter	Part # 98062.000	\$19.00
--------------	------------------	---------

## 60 cc Syringe



60 cc Syringe	Part # 66382.000	\$2.50
---------------	------------------	--------

# Tools

Tools

## AN Wrench Set

AN4, AN6, AN8, AN10



AN wrench set with pouch	Part # 98294.000	\$95.00
Pouch only	Part # 98294.100	\$18.85

## Reamer, Chucking

Reamer .1875 3/16	Part # 60028.000	\$17.25
Reamer .2500 1/4	Part # 60030.000	\$20.50
Reamer .3125 5/16	Part # 60032.000	\$21.50
Reamer .3750 3/8	Part # 10096.000	\$26.00
Reamer .4375 7/16	Part # 10245.000	\$32.00
Reamer Kit All 5 listed above	Part # 55555.000	\$101.50

## Drill Bits

Bit, Drill #30 Short	Part # 64197.000	\$1.88 ea.
Bit, Drill #40 Short	Part # 64188.000	\$2.16ea.
Bit, Drill #30 Long 12"	Part # 60024.000	\$16.00 ea.
Bit, Drill #40 Long 12"	Part # 60025.000	\$16.00 ea.
Bit, Drill Acrylic 1/8" for use on Bubble Doors	Part #64303.000	\$7.83
Bit, Drill Acrylic 1/4"	Part # 64034.000	\$8.00
Bit,Drill Acrylic 3/16"	Part E 64304.316	\$8.00
Bit Drill Acrylic 5/16	Part # 64303.516	\$8.00



Kitfox Aircraft, LLC

ORDER PARTS—Ph. (208) 337-5111 / Fax (208) 337-5116 / Email - [orderparts@kitfoxaircraft.com](mailto:orderparts@kitfoxaircraft.com)

ALL PRICES ARE SUBJECT TO CHANGE WITHOUT NOTICE

# Upholstery

Upholstery

*Fabric samples and upholstery color selection Can be emailed only.*

## Upholstery Kit for Series 5, 6, 7 and SS

### Also Available for Model 3 & 4 \*\*

The following items are in the Upholstery Kit(s)

- Seat Cushions (4)
- Fuel Line Covers (2)
- Floor Carpets w/Stick Boots (Salt/Pepper Color Only)
- Side Kit Panels w/map pocket
- Center Console Sides & Top Material
- Glare Shield Material
- Kitfox Logo
- Temper Foam (Bottoms Only)
- \*\*Model 3/4 only L Carpets



Ask for color charts and information to be emailed.

### **Special Order**

Velour	Part # 10106.000V	\$1,595.00
Suede	Part # 10107.105	\$1,895.00

## Upholstery Kit With New Diamond Stitch Pattern- Color insert choice of stitch colors And Logo

The following items are in the Upholstery Kit(s)

- Seat Cushions (4)
- Vinyl Insert
- Fuel Line Covers (2)
- Floor Carpets w/Stick Boots (Salt/Pepper Color Only)
- Side Kit Panels w/map pocket
- Center Console Sides & Top Material
- Glare Shield Material
- Kitfox Logo
- Temper Foam (Bottoms Only)
- \*\*Model 3/4 only L Carpets



Ask for color charts and order information to be emailed.

### **Special Order**

Available in Suede Only	Part # 10107.295	\$2395.00
-------------------------	------------------	-----------

# Upholstery

Upholstery

*Fabric samples and upholstery color selection sheets available on request*

## Carpeted Side Kick Panels

Available for Model 4, Series 5, 6, 7 and Super Sport.  
(salt & pepper color only)



Classic Model 4 - No pocket	Part # 10612.103	\$160.00
Series 5 & 6 - Includes Map & Cell Phone pocket	Part # 10106.109	\$175.00

## Custom Fitted Door Panels, Set

Series 5, 6, & 7. These door panels are custom fitted to your door frame to give your cockpit that finished look. Includes a side pocket for maps. Specify door latch type. Choice of colors. Not for use on bubble doors or current standard Lexan doors.



Velour	Part # 10106.107 V	\$200.00
Synergy Suede	Part # 10106.107 S	\$225.00

## Booster Pads

Shown Below: Seat insert and Back Booster w/velcro

Shown is Booster Back  
And Booster Seat Bottom  
Reverse Style  
Available in 2 or 3 "  
Logo On Seat Back.

**Great for the Kids.**



2 or 3" Booster Back with Logo	Part # 9109-2 or 9109-3	\$270.00
2 or 3 " Booster Seat (reverse style)	Part # 9112 -2 or 9112-3	\$245.00
Back Booster -Velcro's to Seat Back 2 or #3	Part # 9111	\$245.00
Seat Bottom Insert- (insert into seat well )	Part # 9110	\$175.00

Kitfox Aircraft, LLC

ORDER PARTS—Ph. (208) 337-5111 / Fax (208) 337-5116 / Email - [orderparts@kitfoxaircraft.com](mailto:orderparts@kitfoxaircraft.com)

ALL PRICES ARE SUBJECT TO CHANGE WITHOUT NOTICE



# Windows, Pre-Formed Plastics

Windows, Pre-Formed Plastics

## Poly-Carb Windshields (Lexan)

Windshield pattern for Model 1, 2, 3 on .060 flat sheet Lexan. Clear only.

Model 1, 2, & 3	Part # 54010.000	\$175.00
-----------------	------------------	----------

Windshield pattern Model 4 on .093 flat sheet Lexan. Clear only.

Model 4	Part # 54021.000	\$175.00
---------	------------------	----------

## Poly-Carb Door Windows (Lexan)

Door window, top

Model 2, 3, & 4	Part # 54022.000	\$42.00
-----------------	------------------	---------

Door window, bottom

Model 2, 3, & 4	Part # 54024.000	\$42.00
-----------------	------------------	---------

## Poly-Carb Windows (Lexan)

Quarter window - .060 Poly-Carb sheet. Clear only. 15" x 15" Sheet

Series 5, 6, 7, & SuperSport	Part # 14072.000	\$10.50 ea.
------------------------------	------------------	-------------

## Windows, Pre-Formed Plastics

### Turtledeck

Turtledeck window, full. 1 piece of 1/8" Lexan.  
Tinted only.



Kitfox Model 2 & 3	Part # 11153.601 Model 2 Part # 11153.701 Model 3	\$350.00 \$350.00
Classic Model 4	Part # 11153.101	\$350.00
Series 5, 6, & 7 Short	Part # 11153.201	\$350.00
Series 7A	Part # 11153.301	\$350.00
S-7 Super Sport or STi	Part # 11153.501	\$350.00

### Turtledeck Hinge Kit

For easier access into the cargo area.  
Kit includes UV resistant plastic hinge,  
aluminum angle, and all hardware needed  
to install.



Turtledeck Hinge Kit	Part # 11153.888	\$59.95
----------------------	------------------	---------



Nobody who has not been up in the sky on a  
glorious morning can possibly imagine the way  
a pilot feels in free heaven.

William T. Piper  
President of Piper Aircraft Corporation.

# Windows, Pre-Formed Plastics

## Pre-Formed Windshields

These pre-formed, acrylic windshields & doors are custom made specifically for Kitfox aircraft. Available in clear, green or gray tinting for all models of the Kitfox. Please specify model.

**Pricing noted below does not include Freight charges.**

	Clear	Light Smoke
Kitfox 2 & 3 <b>Call for Details</b>	\$663.00	\$860.00
Kitfox 4	\$663.00	\$860.00
Series 5 (short version requires skylight sold separately)	\$556.00	\$690.00
Series 5, 6, 7, & Super Sport (Long version 1 Piece)	\$663.00	\$860.00
Windshield Installation KFA	Part # 64301.000	\$60.00

## Pre-Formed Doors (Bubble Doors)

Full acrylic doors for Model 4, Series 5, 6, 7 and Super Sport. Bubble doors are available in clear, green or gray tint. Also available with UV Block (call for pricing).

**Pricing noted below does not include Freight charges.**



	Clear	Light Smoke
Model 4, Series 5, 6, 7, Super Sport ,STi - one door	\$ 415.00 ea.	\$498.00 ea.
Installation Kit—S5,6,7 two doors	Part # 1328-KFA	\$85.00

To invent an airplane is nothing.  
To build one is something.  
To fly is everything.

Otto Lilienthal



## Windows & Door Options

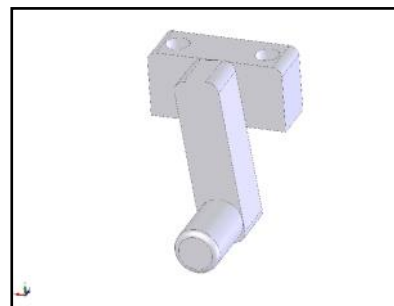
### Classic Model 4 Door Latch Retrofit Kit

Not a Stock Item, Please plan for manufacturing lead time.



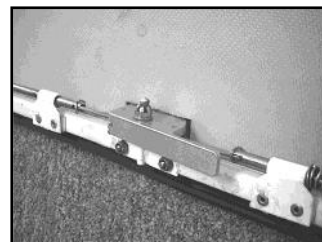
Model 1, 2, 3, & 4	Part # 10403.000	\$225.00
--------------------	------------------	----------

### Series 5, 6, 7, SS/ STi Door Latch Handles (both sides)



Series 5, 6, 7, & Super Sport/STi	Part # 98021.100	\$145.00
-----------------------------------	------------------	----------

### Dual Pin Door Latch Kit Series 5, 6 & 7 Super Sport / STi



**Secures the bottom of the door at the front and rear**

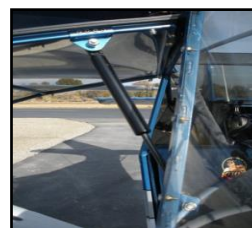
Dual pin door latch kit (both sides)	Part # 64935.000	\$425.00
--------------------------------------	------------------	----------



# Windows & Door Options

## Gas Door Spring Strut Kit

Upgrade your early model Kitfox. Gives you the Ability to hold your cabin door open on the ground And in flight.. Includes hardware & door shocks.



Model 1, 2, 3, & 4	Part # 69120.000	\$125.00
--------------------	------------------	----------

## Under Seat Tool Box

Box Only sold, up to the installer to create his/her install Gives that extra storage under the seat for smaller items.

Sample install only

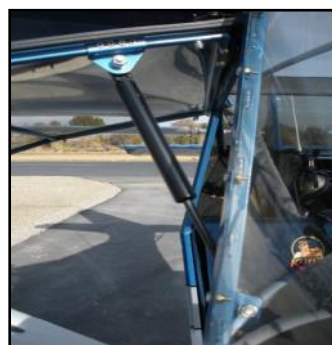


Box Covers



Model 4, Series 5, 6, 7, & Super Sport	Part # 9001-B	\$45.00 ea.
Storage Box Covers Lexan	Part # 17001.502	\$10.50 ea.

## Gas Door Struts



Model 1, 2, 3, & 4 - fiberglass door	35 lbs.	Part # 16001.000	\$29.95 ea.
Series 5, 6, & 7 - fiberglass door	50 lbs.	Part # 16011.000	\$29.95 ea.
Bubble door	50 lbs.	Part # 98083.000	\$39.00ea.

# Wings & Wing Options

## Quick Build Wing

You can save hundreds of hours of building time with a custom built quick build wing for your Kitfox aircraft. Wings are built on a professionally made factory wing jig for certified precision every time. Price is for labor only. Does not include wing kit. Full Wing Kits Are Available—Model 4 S 5,6,7, Super Sport & STi Call for pricing and details.



Model 4, Series 5, 6, 7, & Super Sport	Part # 974	call
--	------------	------

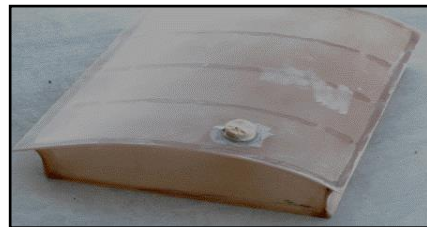
## Flaperons

Model 4, Series 5, 6, 7 and Super Sport

Flaperon A-Symmetrical LEFT	Part # 62020.101 L	\$800.00
Flaperon A-Symmetrical RIGHT	Part # 62020.102 R	\$800.00
Flaperon Symmetrical LEFT	Part # 62020.501 L	\$850.00
Flaperon Symmetrical RIGHT	Part # 62020.601 R	\$850.00

## Fiberglass Wing Tank, 13 Gal Tank Only

New corrosion resistant resins



Right Side—Model 4, Series 5, 6, 7 & Super Sport	Part # 10090.000	\$550.00
Left Side—Model 4, Series 5, 6, 7 & Super Sport	Part # 10091.000	\$550.00
Right Side—Model 1, 2, & 3 (Specify Wing Twist)	Part # 66020.000	\$700.00
Left Side—Model 1, 2, & 3 (Specify Wing Twist)	Part # 66019.000	\$700.00
Fuel Tank Kits***	Part # 64929.000 Priced from _____	\$1,175.00

\*\*\*Fuel Tank Kit includes left and right side tanks, fittings, quick drains, fuel line, vent line, inspection covers & rings, RTV 739, etc.

# Wings & Wing Options

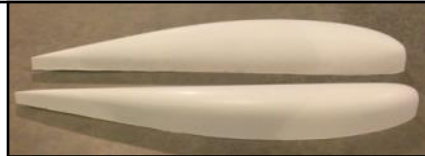
## Flush Mounted Wing Tank Quick Drains

Avoid spilling fuel on your doors when opened.

All Models	Part # 64286.101	\$25.00 ea.
------------	------------------	-------------

## Standard Removable Wing Tips

No provisions for lighting



Standard Wing Tip LEFT	Part # 27020.102 LFT	\$159.00
Standard Wing Tip RIGHT	Part # 27019.102 RGT	\$159.00
Standard Wing Tip Kit – tips & mounting hardware	Part # 64379.000	\$375.00

## Standard Removable Upgraded Wing Tips

Mounting provisions for both landing/taxi lights  
and nav/strobe lights



Upgraded Standard Tip LEFT w/landing light provision	Part # 27020.601 LFT	\$199.00
Upgraded Standard Tip RIGHT w/landing light provision	Part # 27020.602 RGT	\$199.00
Upgrade Standard Tip Kit– tips, hardware, & light lens	Part # 64379.900	\$399.00
Hoerner Style Wing Tip Kit (no landing light provisions)	Part # 64379.Hoerner	\$550.00
Hoerner Style Wing Tip Only Left or Right	Part # 27019.000 or 27020.000	\$225.00
STi Wing Tip Only Left or Right Long	Part # 98283.501 or 98283.502	\$325.00
STi Wing Tip Kit	Part # 64941.701	\$500.00

## STi Wing Landing Light Housing Kit

Aero-LED's SunBeam Landing/Taxi Light x 2 , STi Housing & Lens

Housing Molds into the Extended STi Wing Tip



Light Housing Kit with Aero Led Sunbeam Lights	Part # 98283.500	\$1075.00
--	------------------	-----------

Kitfox Aircraft, LLC

ORDER PARTS—Ph. (208) 337-5111 / Fax (208) 337-5116 / Email - [orderparts@kitfoxaircraft.com](mailto:orderparts@kitfoxaircraft.com)

ALL PRICES ARE SUBJECT TO CHANGE WITHOUT NOTICE

# Wings & Wing Options

## Hoerner Style Removable Wing Tip



Strobe Standoffs

Hoerner Style Wing Tip LEFT Tip only	Part # 27020.000	\$225.00
Hoerner Style Wing Tip RIGHT Tip only	Part # 27019.000	\$225.00
Removable Wing Tip Kit Hoerner Style	Part # 64379.Horn KIT	\$550.00
Strobe Standoff (included in kit)	Part # 67111.000 Left or Right	\$25.00 ea

## Speed Fairing Kit

Streamline your lift struts. (For 1" Diameter Tubes).  
 Kitfox Model 4-1200, Series 5, 6, 7, Super Sport, STi  
 Includes 4 PVC extruded pieces 96" long, lift strut cuffs,  
 and hardware.



Speed Fairing Kit	Part # 69119.000	\$395.00
-------------------	------------------	----------

## Fuel Cap Fairings-

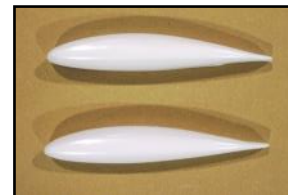
**Stock Varies in and out.**



All Models	Part # 09999-SP	\$50.00 Pair
------------	-----------------	--------------

## Molded Flaperon Tips Supply Varies

Specify type of flaperon.  
 A-symmetrical or symmetrical Please Specify Flaperon style.



Series 7, Super Sport, STi, A-Symmetrical	Part # 02421.000	\$17.50 ea.
Model 4, Series 5, & 6 Symmetrical	Part # 02422.000 SY	\$17.50 ea.



# Wings & Wing Options

## Mass Balance Weights



A-symmetrical or symmetrical  
Please specify.

Model 4, Series 5, 6, 7, & Super Sport	Part # 25023.000	\$105.00 ea.
Model 1, 2, & 3	Part # 29011.000	\$105.00 ea.
Powder coating available (additional)		\$15.00

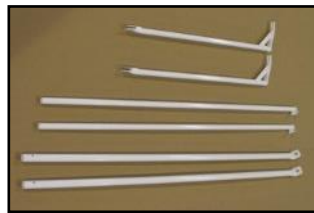
## STOLSPEED Vortex Generators #225 for Wing & Tail Section

Vortex Generators– QTY-225 Wing & Horizontal Tail	Part # 98298.000	\$240.00
---	------------------	----------

## Transport Kit

Kit includes:

- Tail pad
- Wing lock back braces
- Wing support tubes
- Hardware

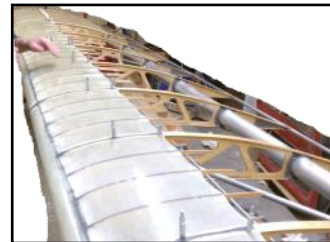


**Specify Model**

Model MIV, 5, 6, 7, & SS	Part # 64925.000	\$525.00
--------------------------	------------------	----------

## LLE Kit (Composite Leading Edge) – Super Sport

This is an all composite leading edge that creates a smooth leading edge for the first 20% of the top part of the wing. Not only does it give an aesthetically pleasing look, but also offers the potential for slightly better STOL and cruise performance. It is available for the Model 4, Series 5, 6, 7, & Super Sport. It is NOT available for the Model 1, 2, or 3 higher Under camber wing.,,,



Composite Leading Edge Kit -Series 5, 6, 7, Super Sport	Part # 100001.000	\$1100.00
---	-------------------	-----------

**Kitfox Aircraft, LLC**

ORDER PARTS—Ph. (208) 337-5111 / Fax (208) 337-5116 / Email - [orderparts@kitfoxaircraft.com](mailto:orderparts@kitfoxaircraft.com)

ALL PRICES ARE SUBJECT TO CHANGE WITHOUT NOTICE



## ORDER FORM

For your convenience, you may place your order by phone (208) 337-5111, fax (208) 337-5116 or email [orderparts@kitfoxaircraft.com](mailto:orderparts@kitfoxaircraft.com). Please be sure to include your daytime phone and email address. You will receive order confirmation via email only. All orders will be shipped by UPS, FedEx Ground or USPS unless otherwise requested. All international shipments will be shipped best way available. **International shipments are subject to terms and conditions.**

Sold To: (Billing Address of Credit Card)	Ship To: (Please do not use P.O. Box)
Name: _____	Name: _____
Address: _____	Address: _____
City: _____ State: ___ Zip: _____	City: _____ State: ___ Zip: _____
Country _____	Country _____
Phone: _____	Phone: _____
Email: _____	Model Kitfox _____ Serial Number _____

Qty.	Part Number	Brief Description	Color Size	Unit Price	Total Price

Credit Card Number: \_\_\_\_\_ Total

Exp.Date \_\_\_\_\_ CVC CODE \_\_\_\_\_ All Major Credit Cards Accepted up to \$7500.00

Signature \_\_\_\_\_

SHIPPING / FREIGHT CHARGES WILL BE ADDED TO TOTAL ORDER  
 ALL PRICES ARE SUBJECT TO CHANGE WITHOUT NOTICE  
 6% STATE SALES TAX WILL BE ADDED TO ALL SALES SHIPPED WITHIN IDAHO

***Kitfox Aircraft LLC***  
***(208) 337-5111 (208) 337 5116 (f)***  
***orderparts@kitfoxaircraft.com***

***Kitfox Aircraft LLC Limited Warranty and Return Goods Policy***

***Our goal is customer satisfaction, in the event of return our policy is as follows:***

- 1) Kitfox Aircraft accepts obligation to the original purchasers only after the sale to replace, with out charge, any part or component, manufactured by Kitfox Aircraft and discovered to be defective within a period of twenty-four (24) months from the date of shipment from Kitfox Aircraft, or the first flight of the aircraft by original purchaser, whichever occurs first. **This is subject to; Original purchaser has done a complete inventory of the order within sixty (60) days of the ship date, and has notified Kitfox Aircraft of any shortages or defects. Warranty only applies to the original purchaser, 2nd + owners are not covered under warranty of any type.** Kitfox Aircraft, reserves the right to make final determination after a quality control inspection to determine any defect. Kitfox Aircraft **does not accept** the return of old ,unused, unwanted out-dated, parts for refunds, credits or trade-in value.
- 2) Purchaser of parts from Kitfox Aircraft accepts sole responsibility for all proper assembly, testing, operation and regular maintenance of any aircraft part and full compliance with all applicable aviation regulations. Kitfox Aircraft's liability for any defective part shall not exceed the total retail value, at time of sale of the part in question.
- 3) Kitfox Aircraft does not warranty any parts manufactured by outside companies such as instruments, avionics, engines, etc., these products carry their own warranty, and must be returned directly to the original manufacturer for credit or replacement. If there are any problems contacting the original manufacturer, Kitfox Aircraft can supply contact information. Do Not return these parts to Kitfox Aircraft for credit or repair.
- 4) Returns: Parts purchased from Kitfox Aircraft only are available for return, Customer must obtain authorization prior to the return. At the discretion of Kitfox aircraft all parts returned will be inspected and if deemed in good condition an in-house credit will be issued to customers account for future purchases. Any parts deemed unusable will be returned to customer at his/her expense or discarded with No refund to customer.
- 5) **A 20% restocking fee will apply for all returned parts**, which are deemed re-usable and or re-salable. Customers must receive prior approval from Kitfox Aircraft. If returned authorization is not obtained, restocking fee will be charged not to exceed 35% of purchase price and will be deducted from credit amount. No shipping or freight charges will be refunded. **All special order parts, are be subject to advance payment and are non returnable or refundable.**
- 6) **Credit Cards-Additional Fee of 3% will be will be charged for amount in excess of \$7500.00**

**All pricing listed in the catalog is subject to change without notice**